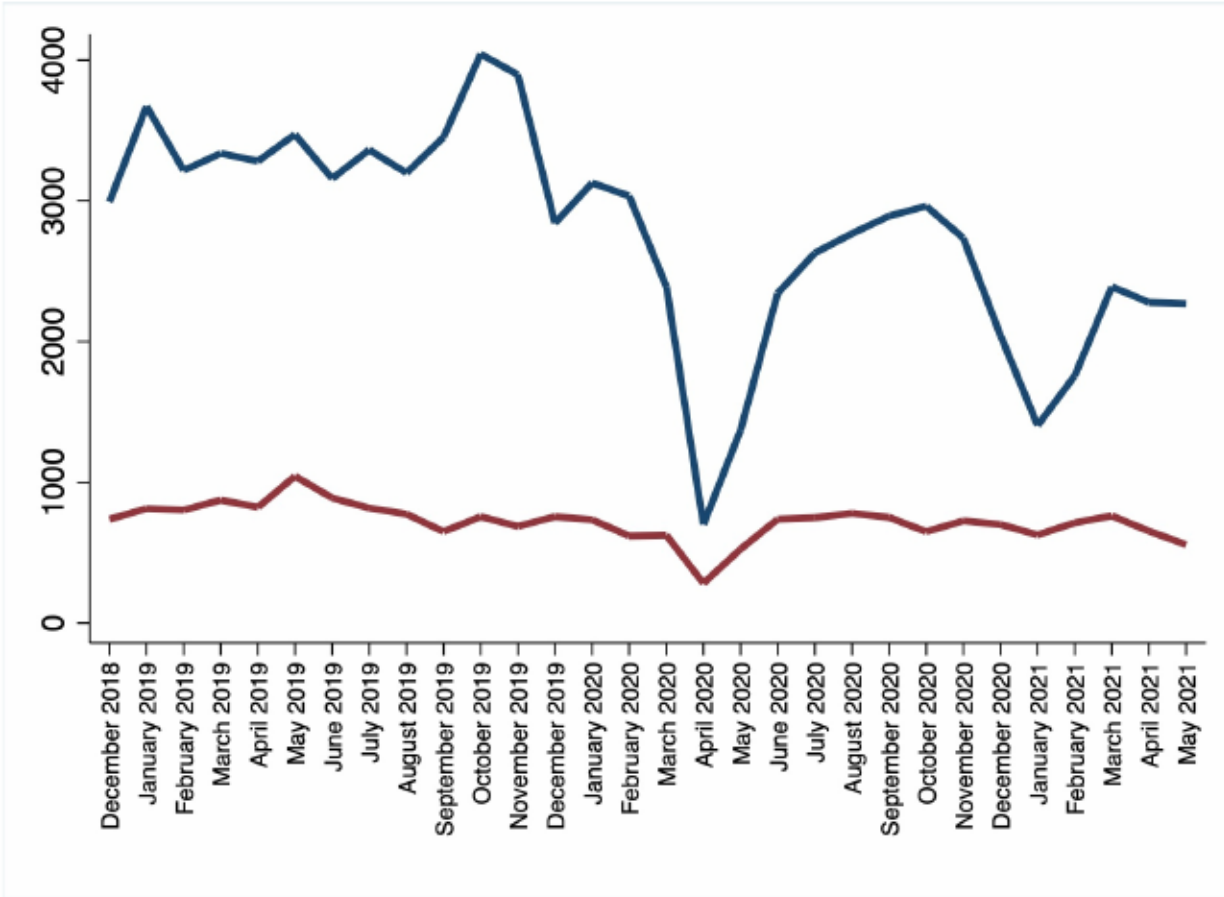
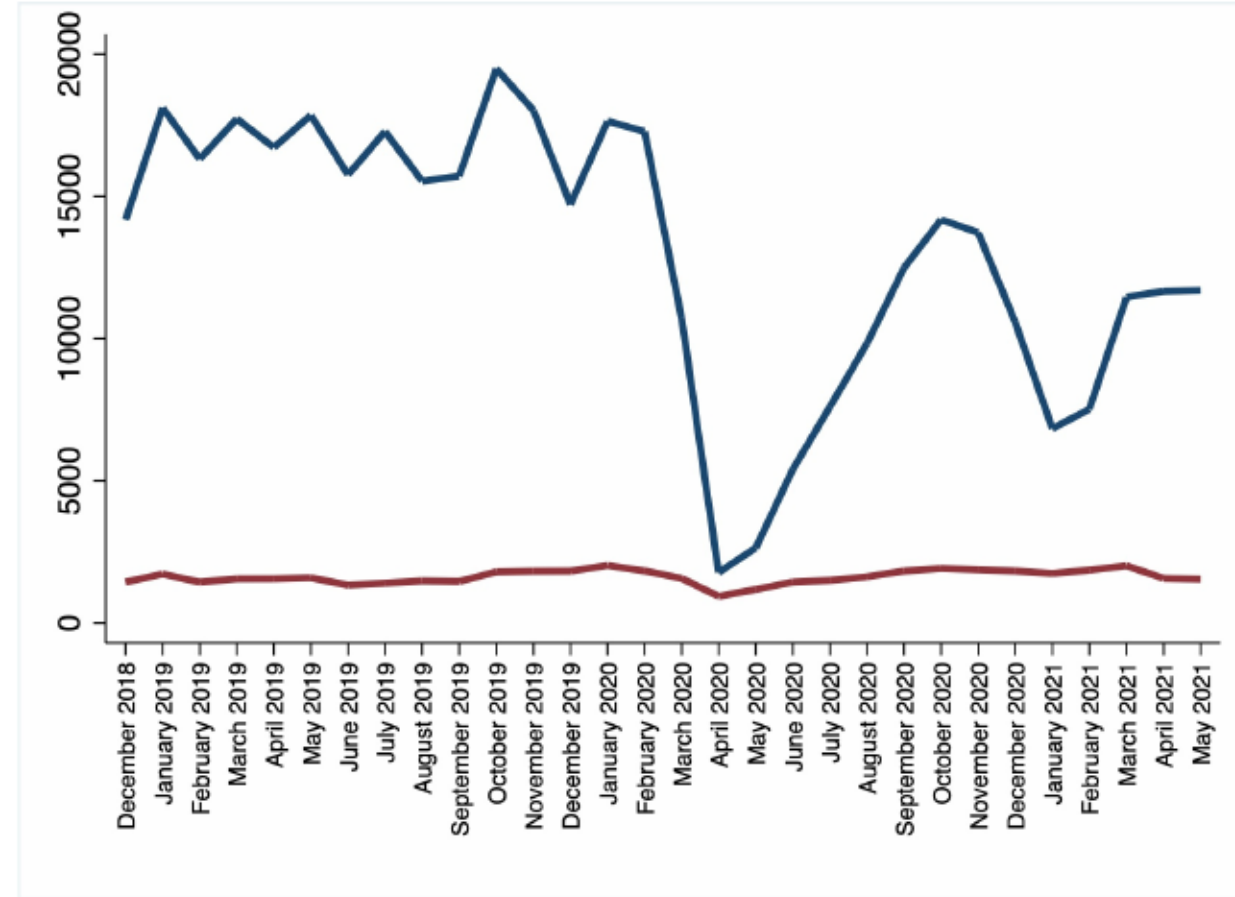


# UK Logbook Dec 18 – May 21 Blue: elective, red: emergency

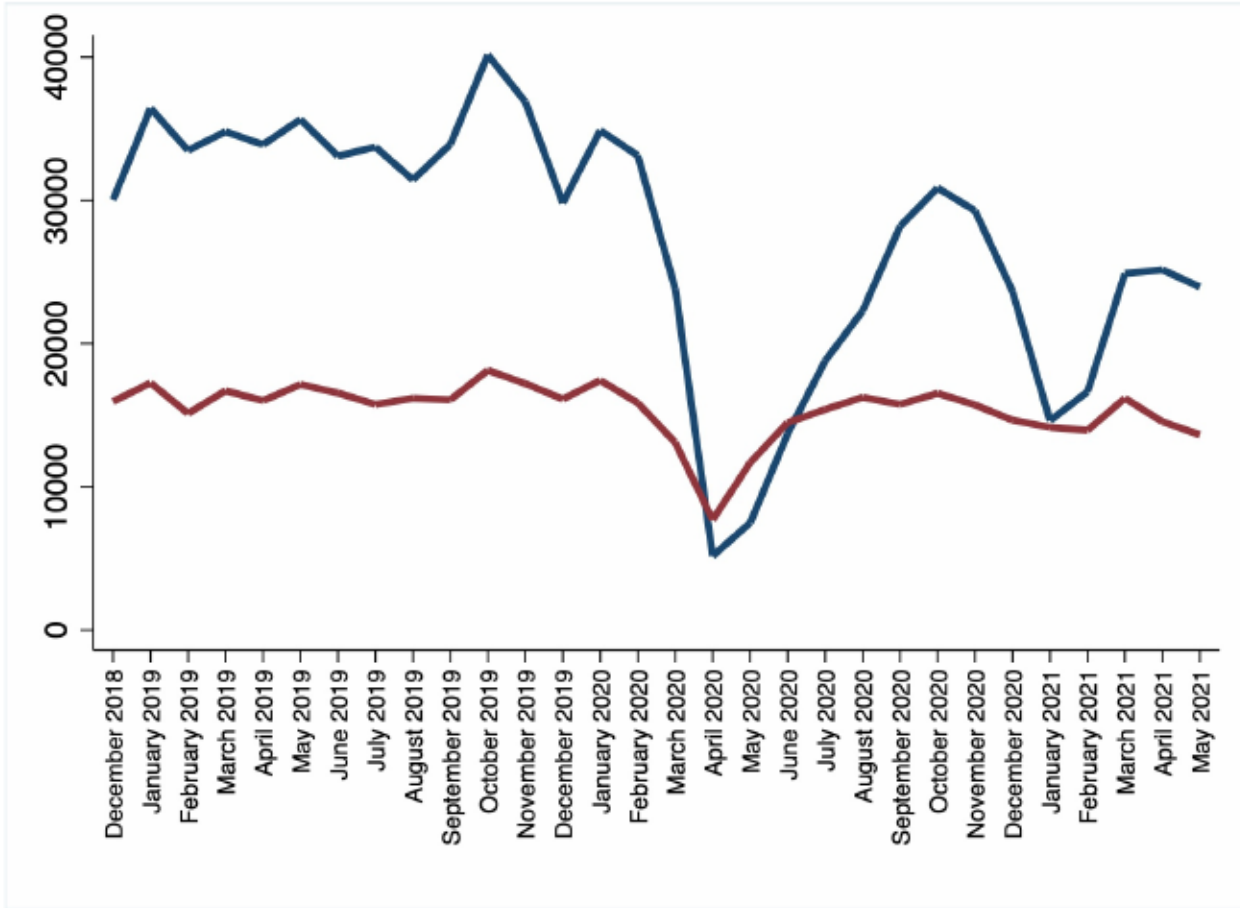
N.B. most recent month may show lower than actual figure due to lag in recording cases performed in e-logbook



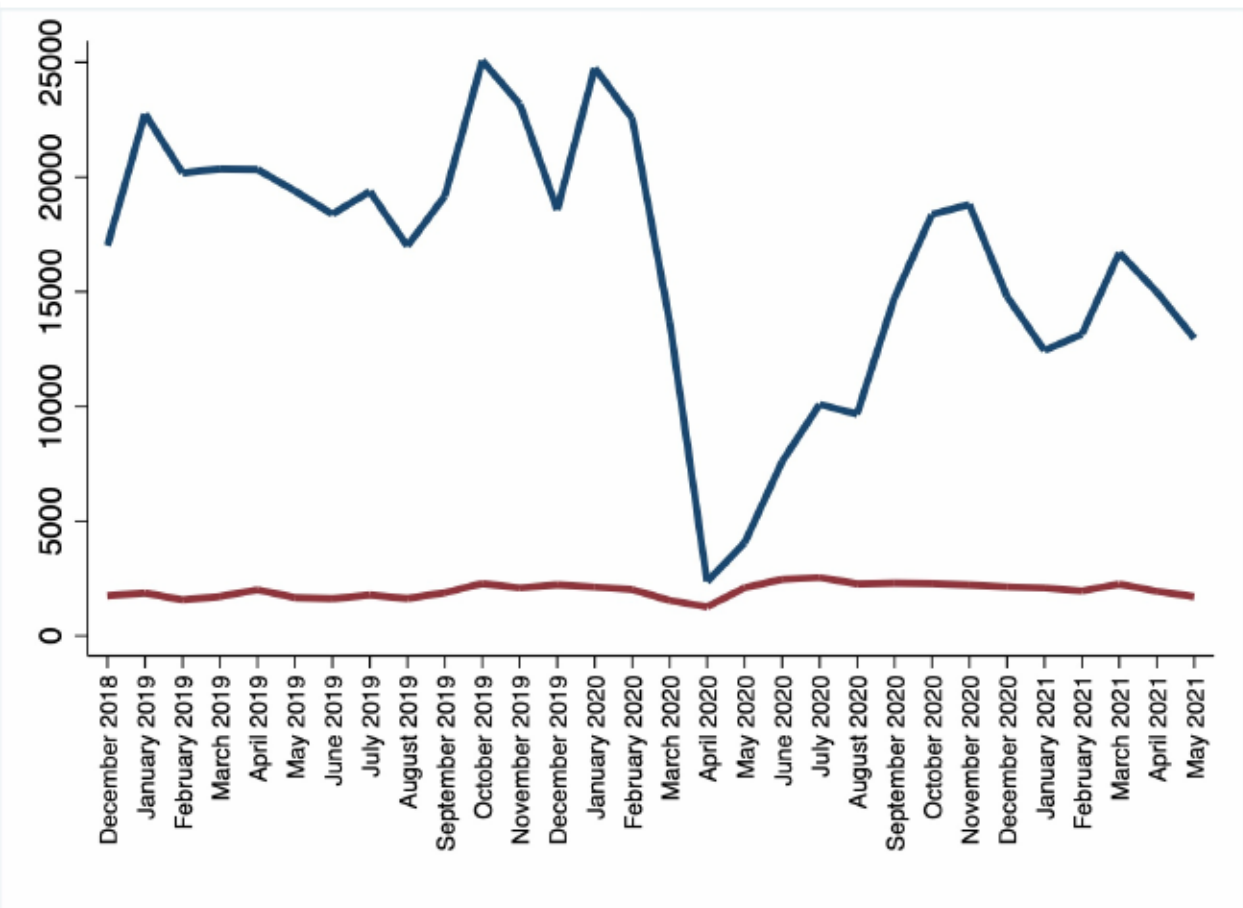
**Cardiothoracics**



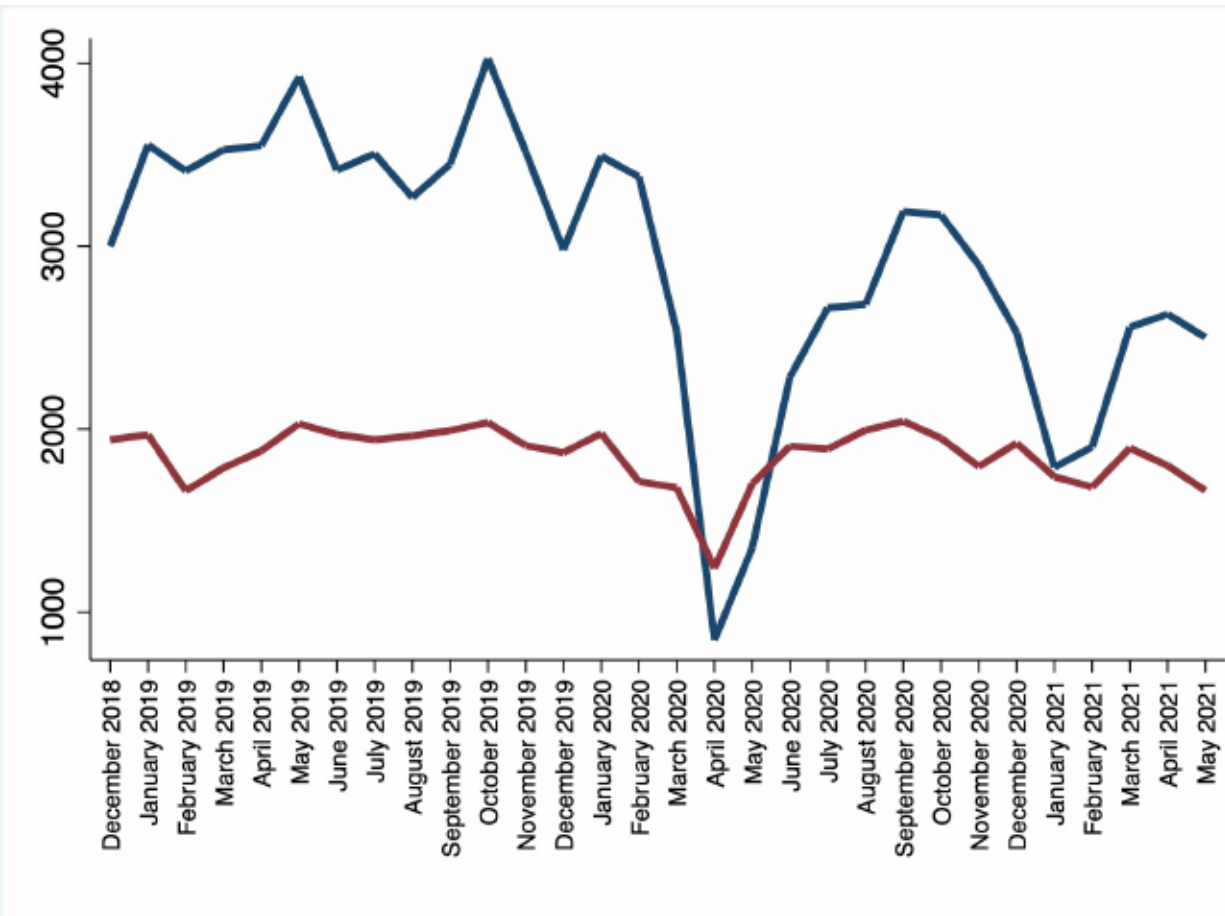
**ENT**



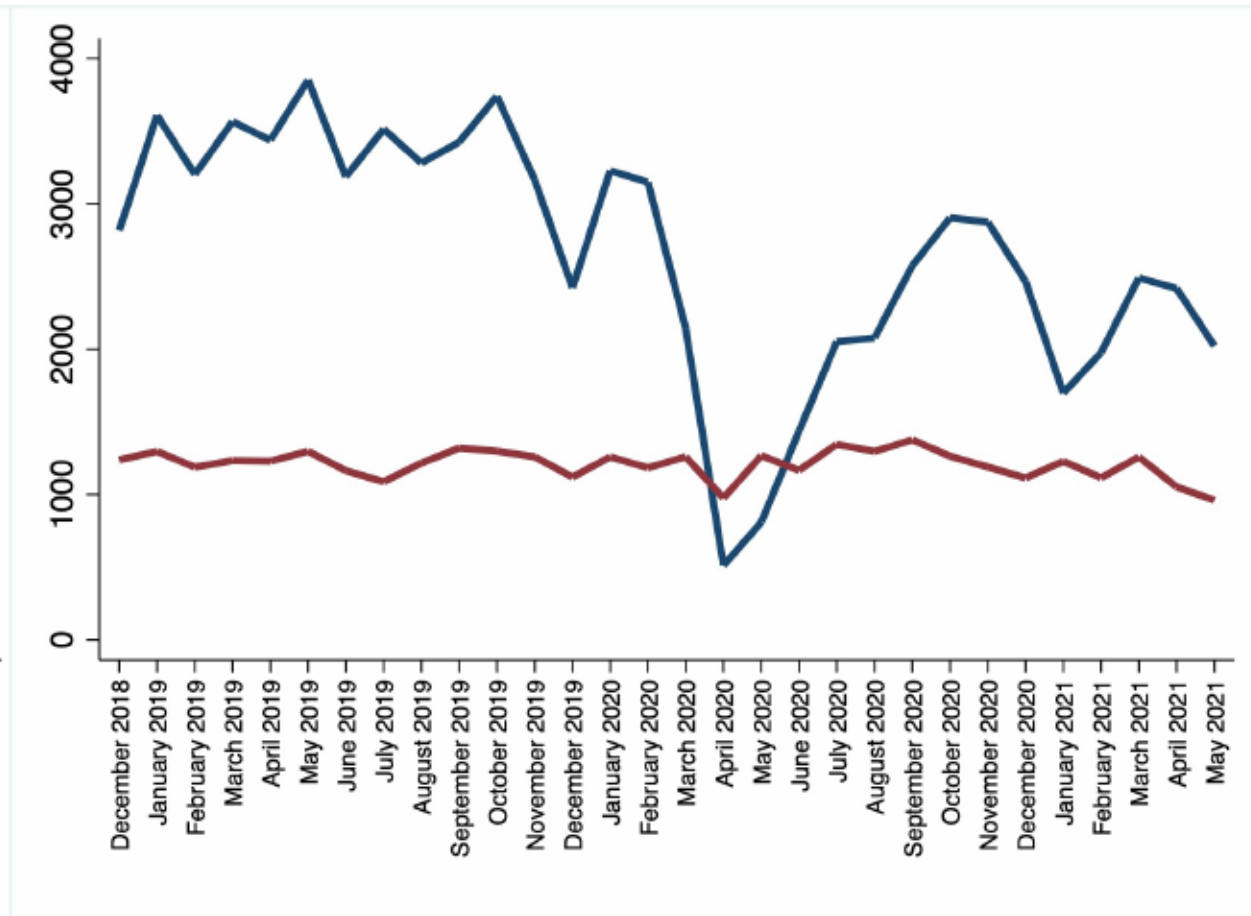
## General Surgery



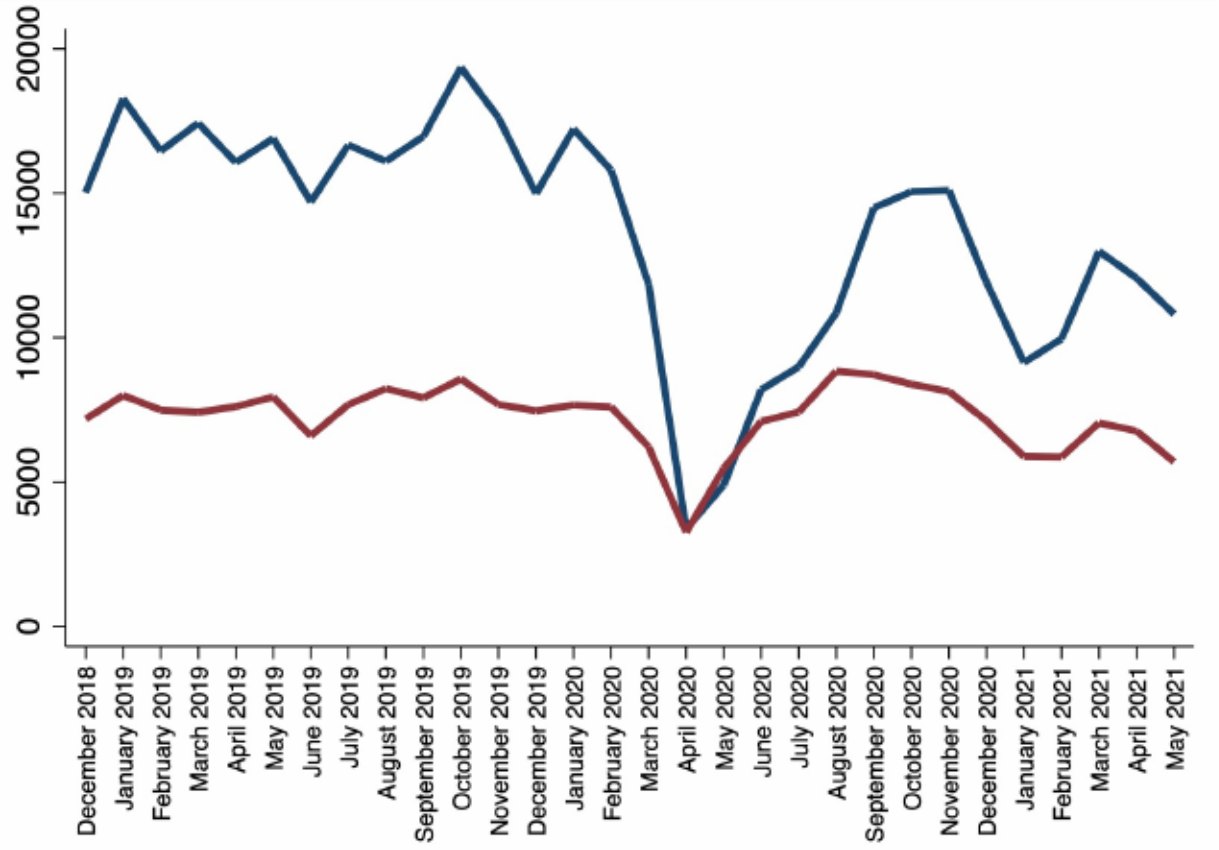
## Maxillo Facial Surgery



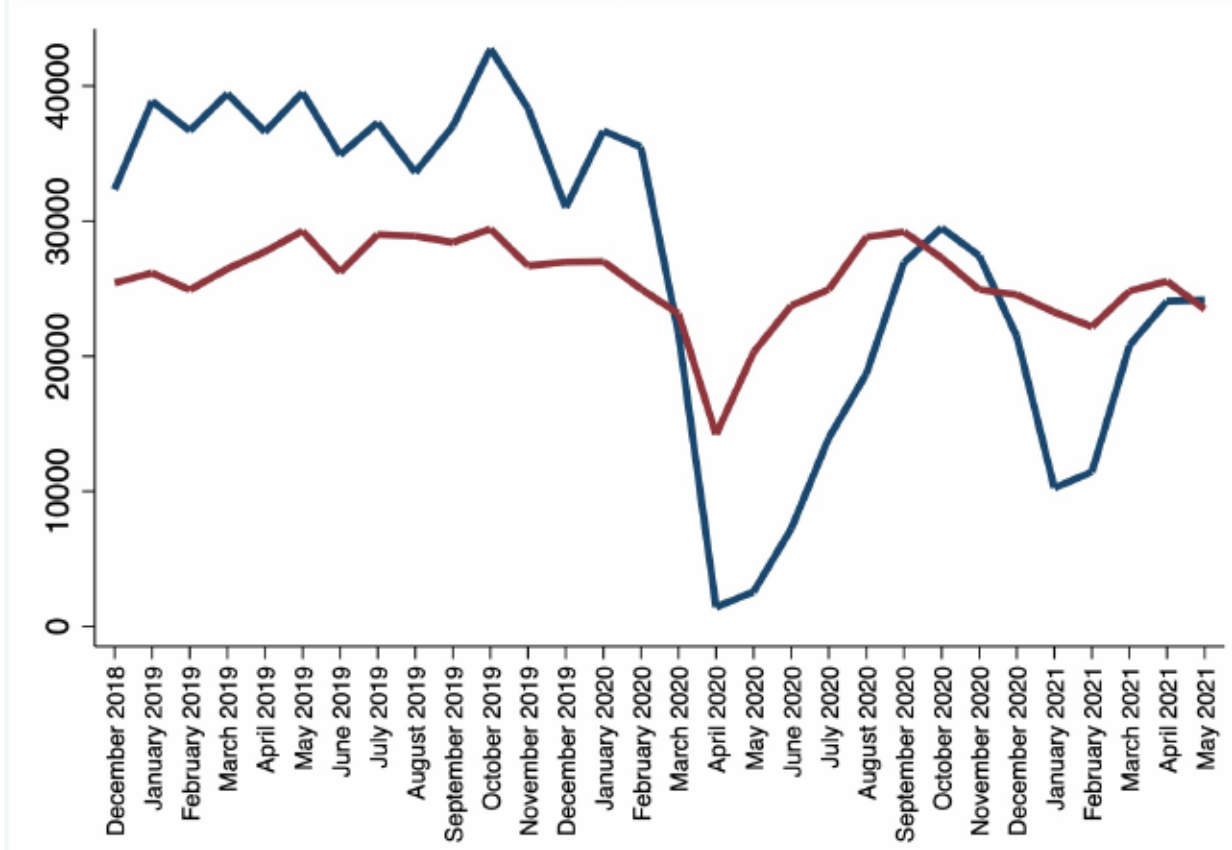
## Neurosurgery



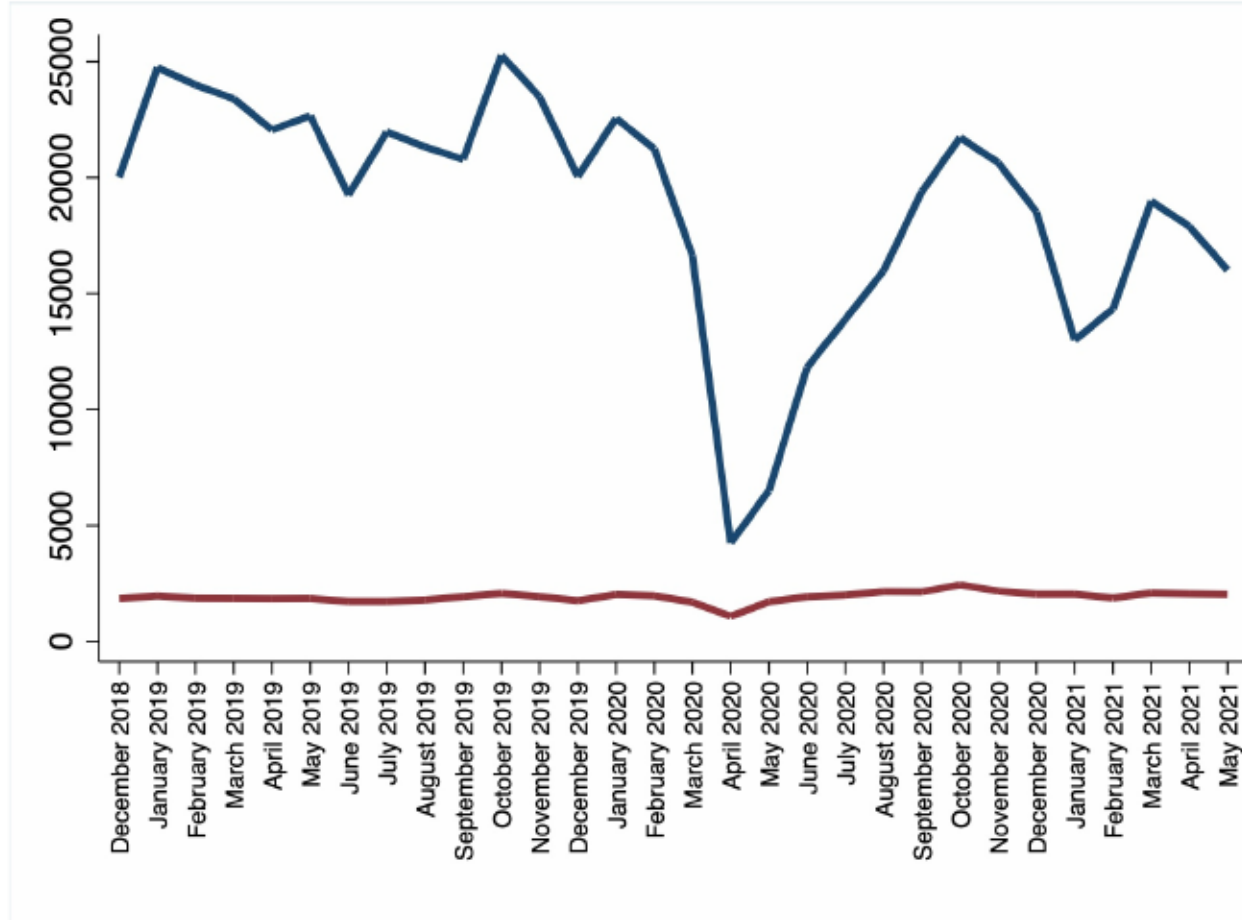
## Paediatric Surgery



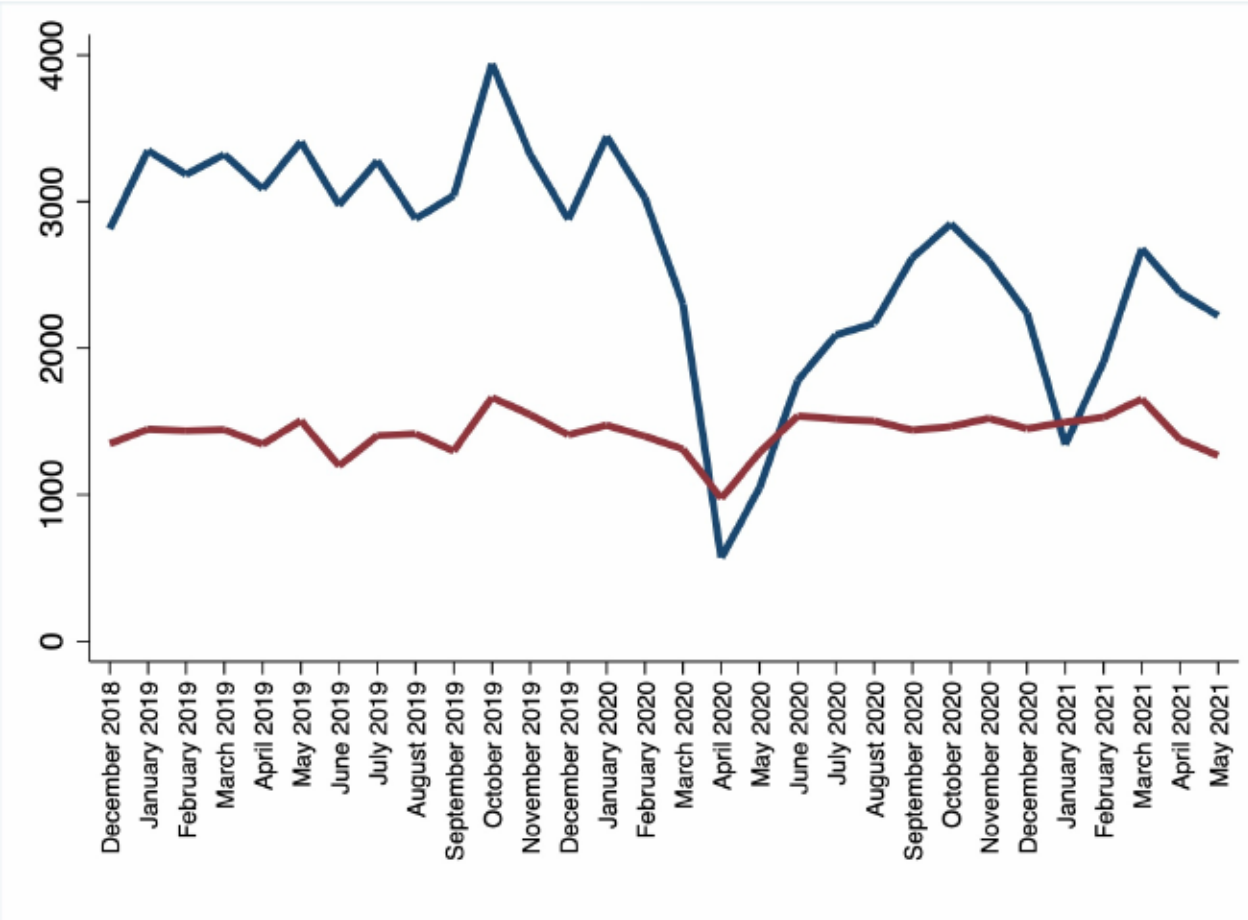
## Plastic Surgery



## T+O



## Urology



## Vascular Surgery